

Getting Started With HUBzero

Michael McLennan
Director, HUBzero® Platform for Scientific Collaboration
Purdue University

Start Your Own Hub!



Open Source Release: LGPL v3 license



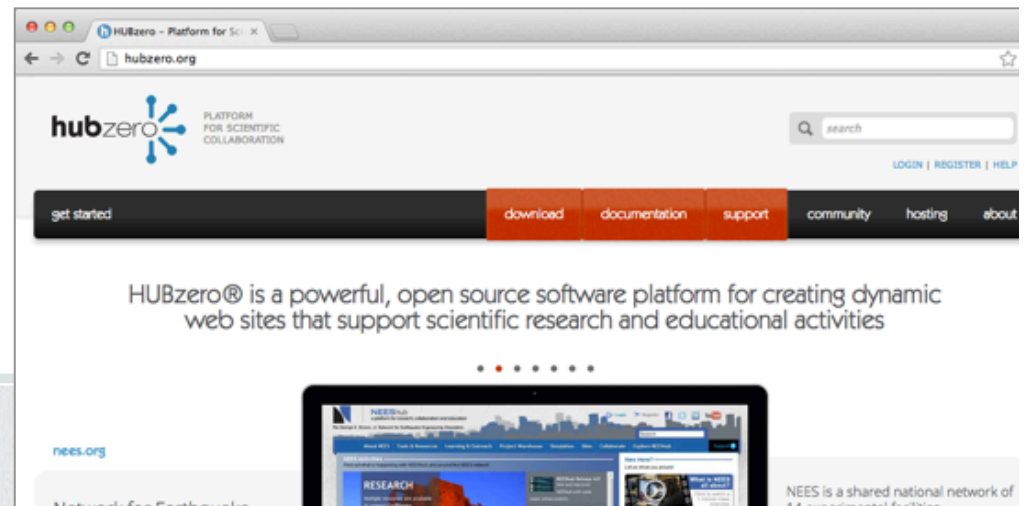
Debian GNU/Linux 6.0 - 64bit



HUB-in-a-box: VMware images

Visit hubzero.org:

- Downloads
- Documentation



Get the VM Image



1



Hub-on-a-stick

Or download source code or VM image:
<http://hubzero.org/download>

2

Download VMware Player:

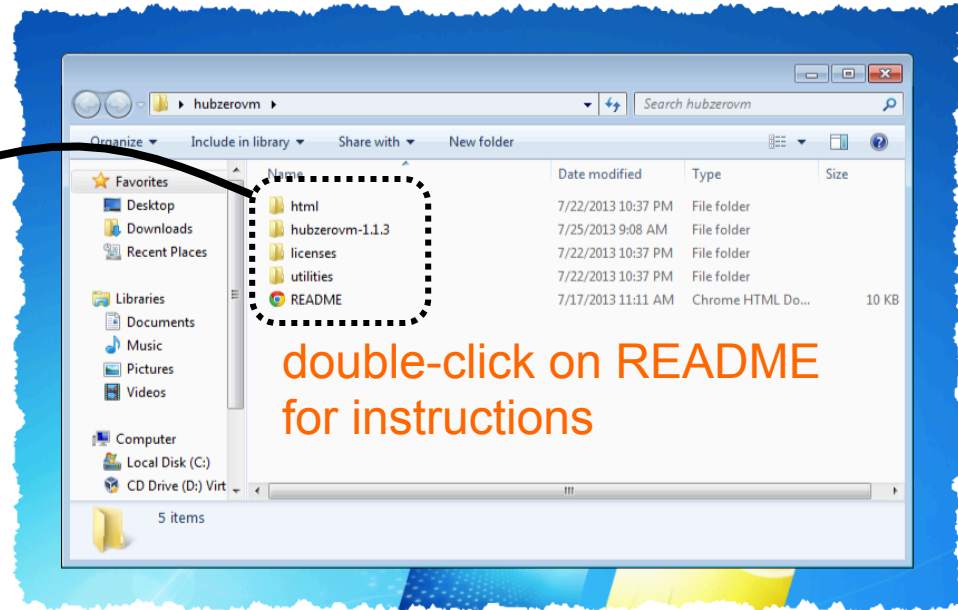
<http://www.vmware.com/go/downloadplayer/>



Start the VM Image



3 Copy hubzerovm-1.1.3 Folder to your computer



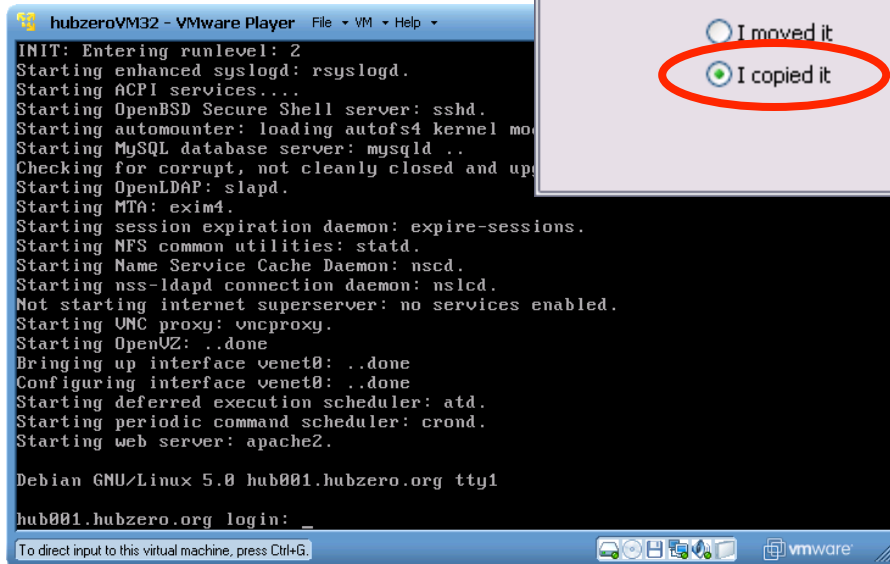
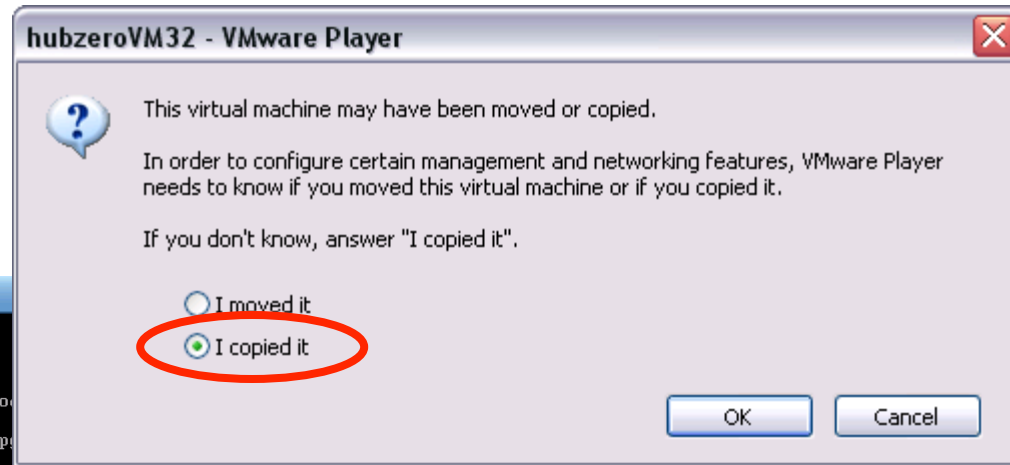
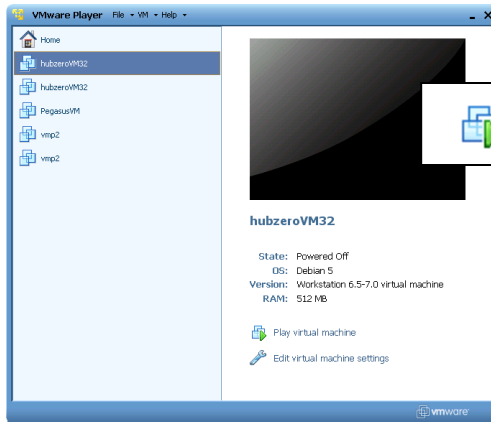
4 Start VMware Player



Open a Virtual Machine

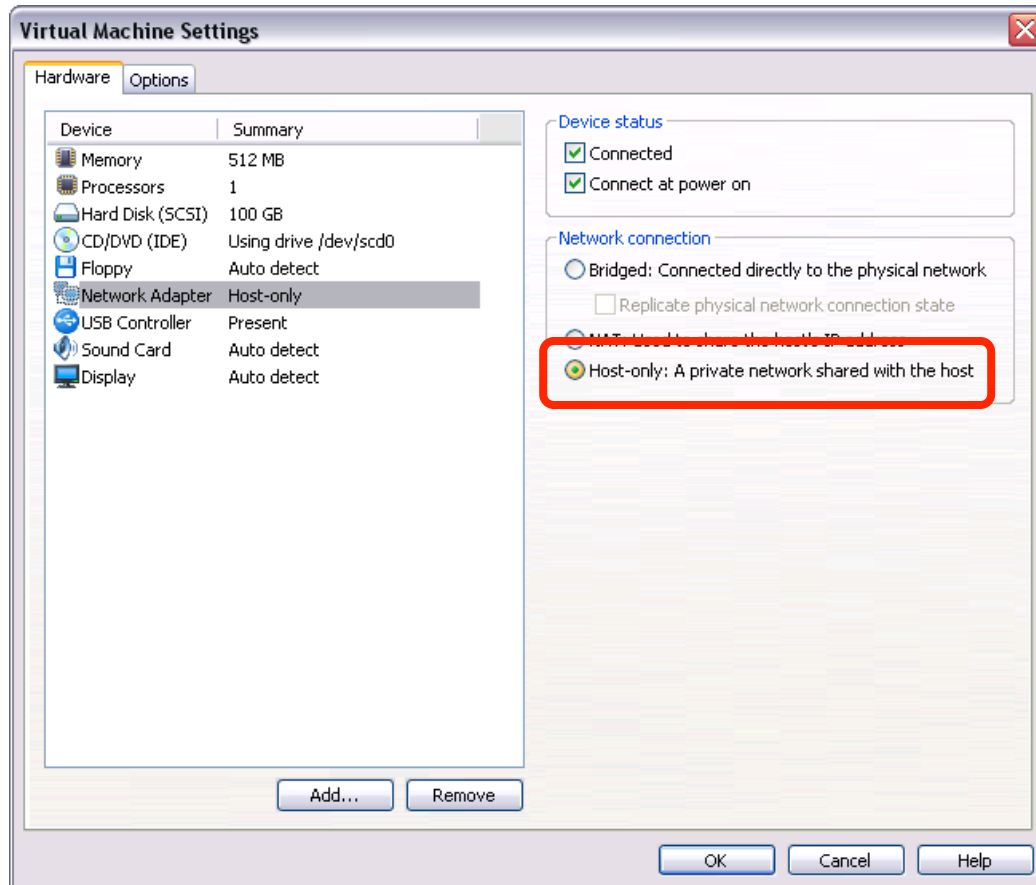
Open an existing virtual machine, which will then be added to the top of your library.

Start the VM Image



Success!

WARNING: Run in Host-Only mode




VM image contains hard-coded passwords such as *hubzero2012* and is susceptible to attack on the internet!

Get Your Hub on the Net



- 5 Set your hub's IP address:
Log in as root, password hubzero2012

`ifconfig eth0`

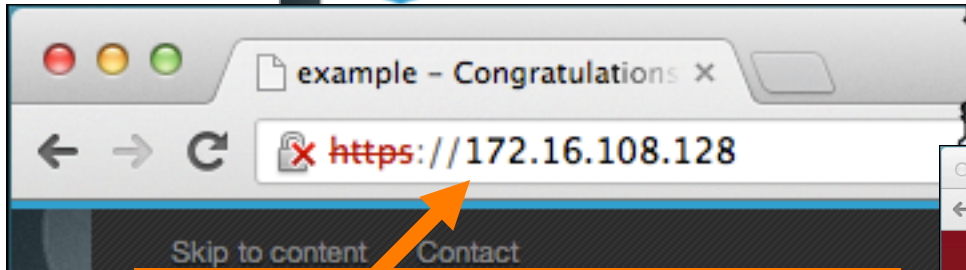
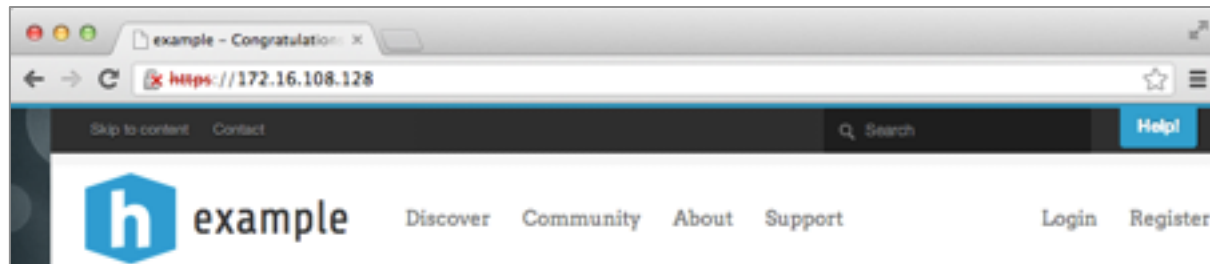
```
root@example:~# ifconfig eth0
eth0      Link encap:Ethernet  HWaddr 00:
          inet addr:172.16.108.128  Bcast:
          inet6 addr: fe80::20c:29ff:fe79
          UP BROADCAST RUNNING MULTICAST
          RX packets:165 errors:0 dropped
          TX packets:165 errors:0 dropped
```

`vi /etc/hosts`

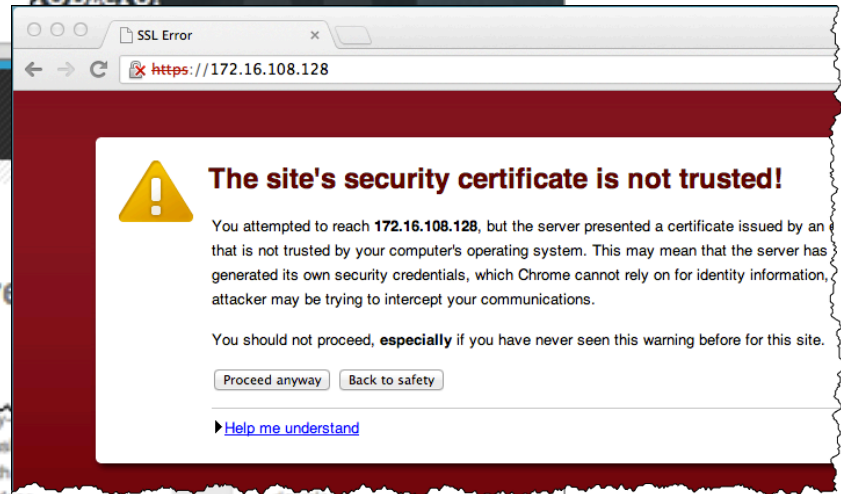
```
127.0.0.1    localhost
172.16.108.128  example.com  example
# The following lines are desirable for IPv6 capable hosts
::1         ip6-localhost ip6-loopback
fe00::0    ip6-localnet
ff00::0    ip6-mcastprefix
```

`restart`

Access your new hub!

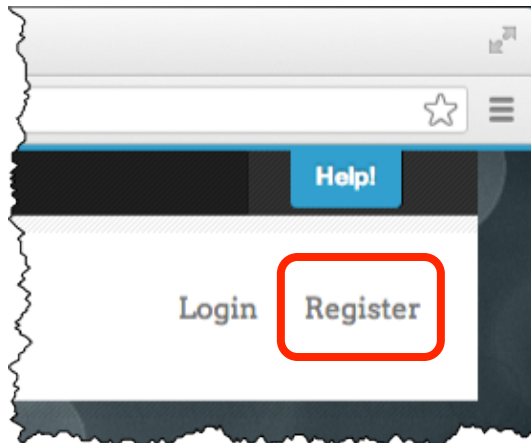


use numeric IP address for testing

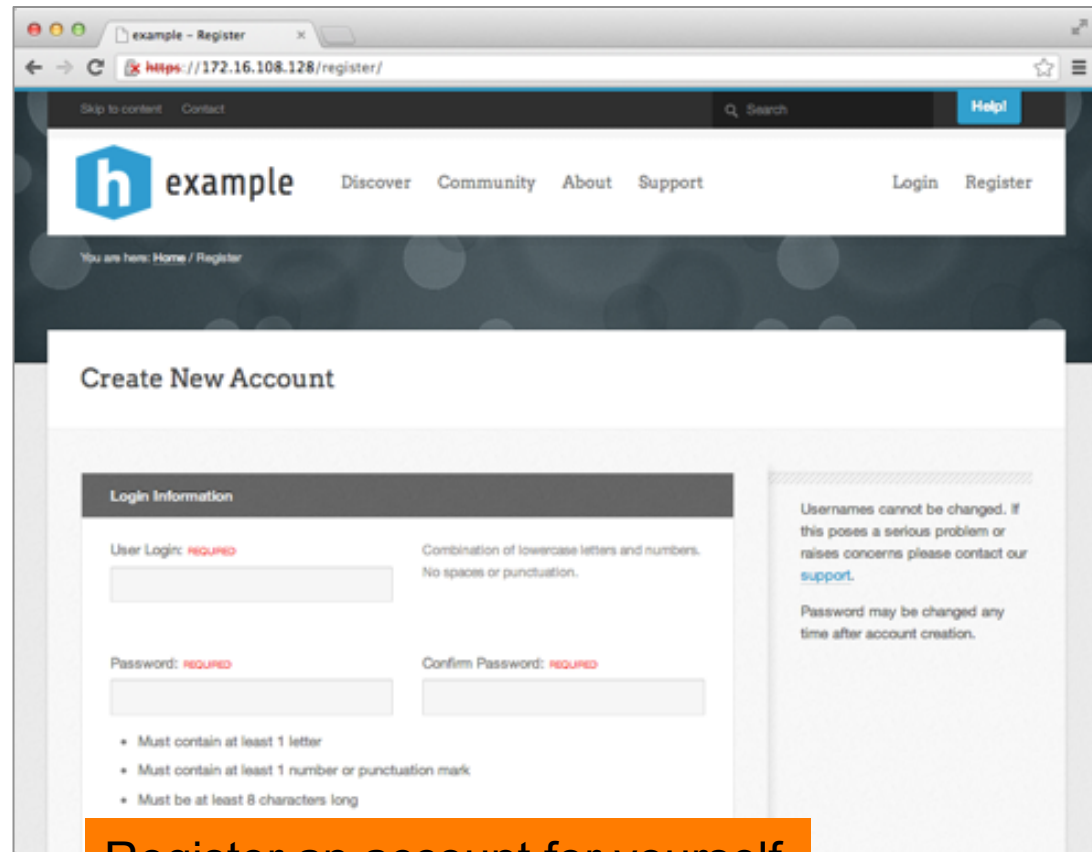


security warning is okay at this point

Register as a New User



Normally, you get an email and confirm your account, but hub is running host-only, so mail won't get out!



Register an account for yourself

Manually Confirm the New User



Address for administrator console

example

Administration Login

Username
admin

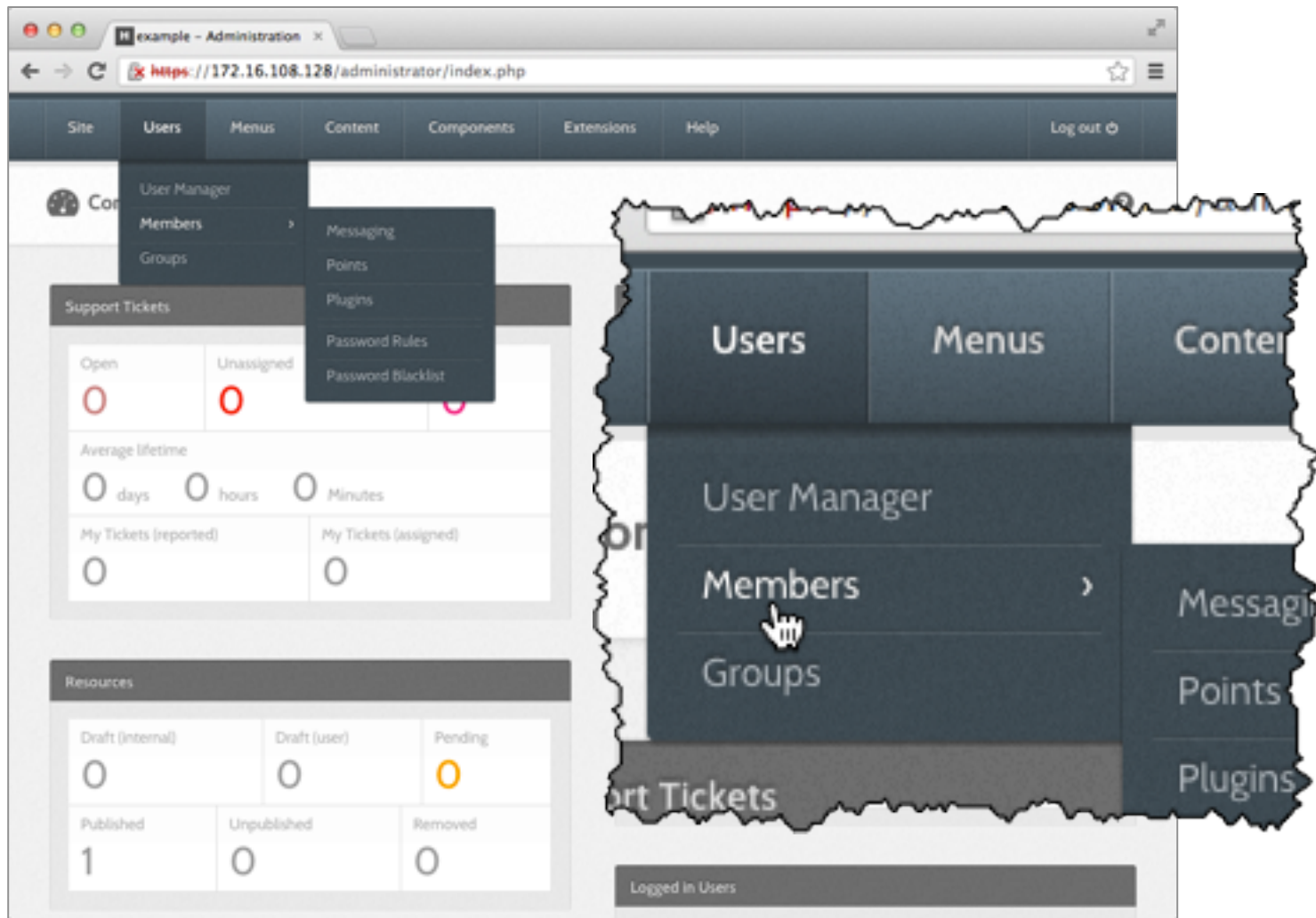
Password
.....

Language
Default

Login

admin
t2W83eITc5

Access “Members” Component

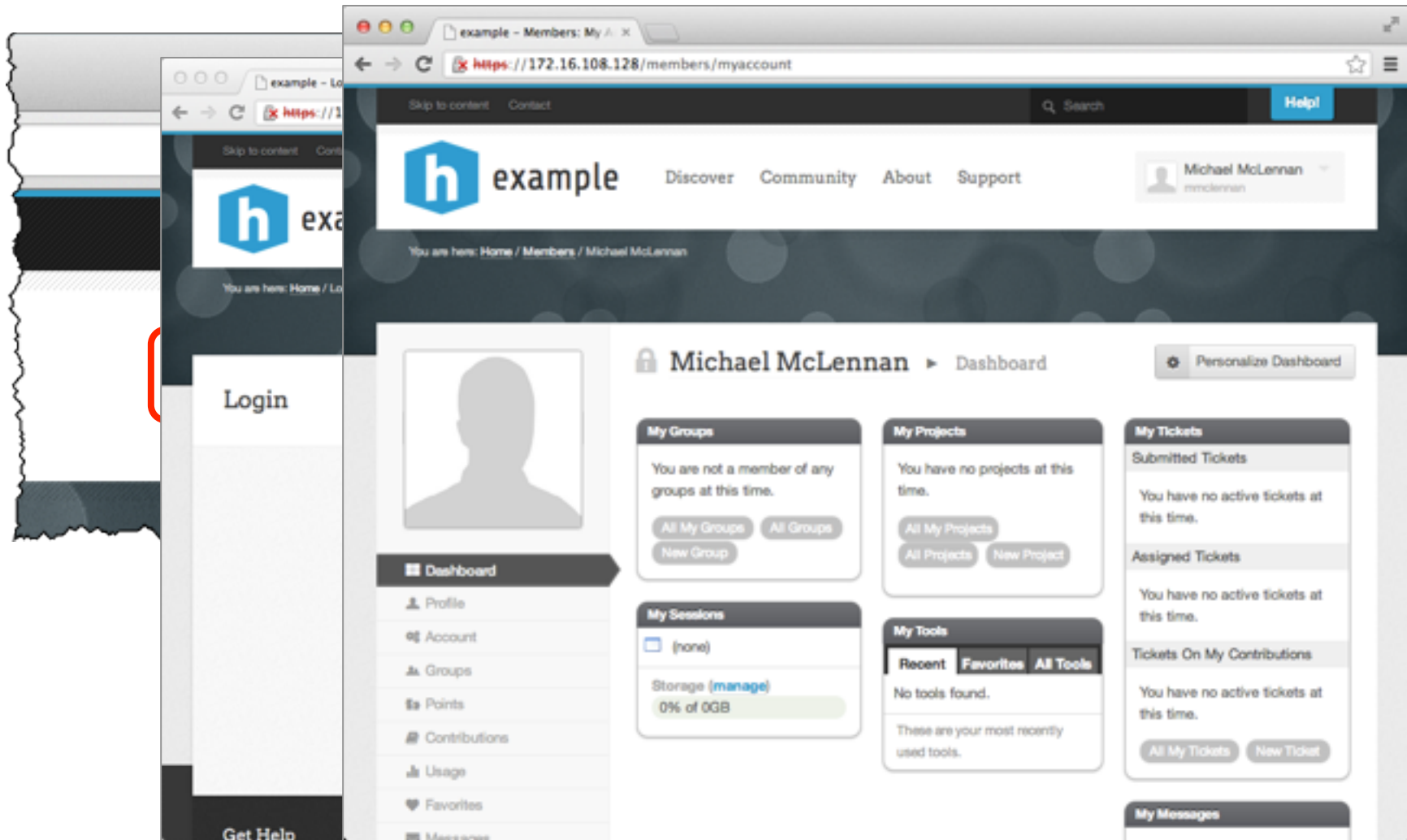


Mark user as "confirmed"

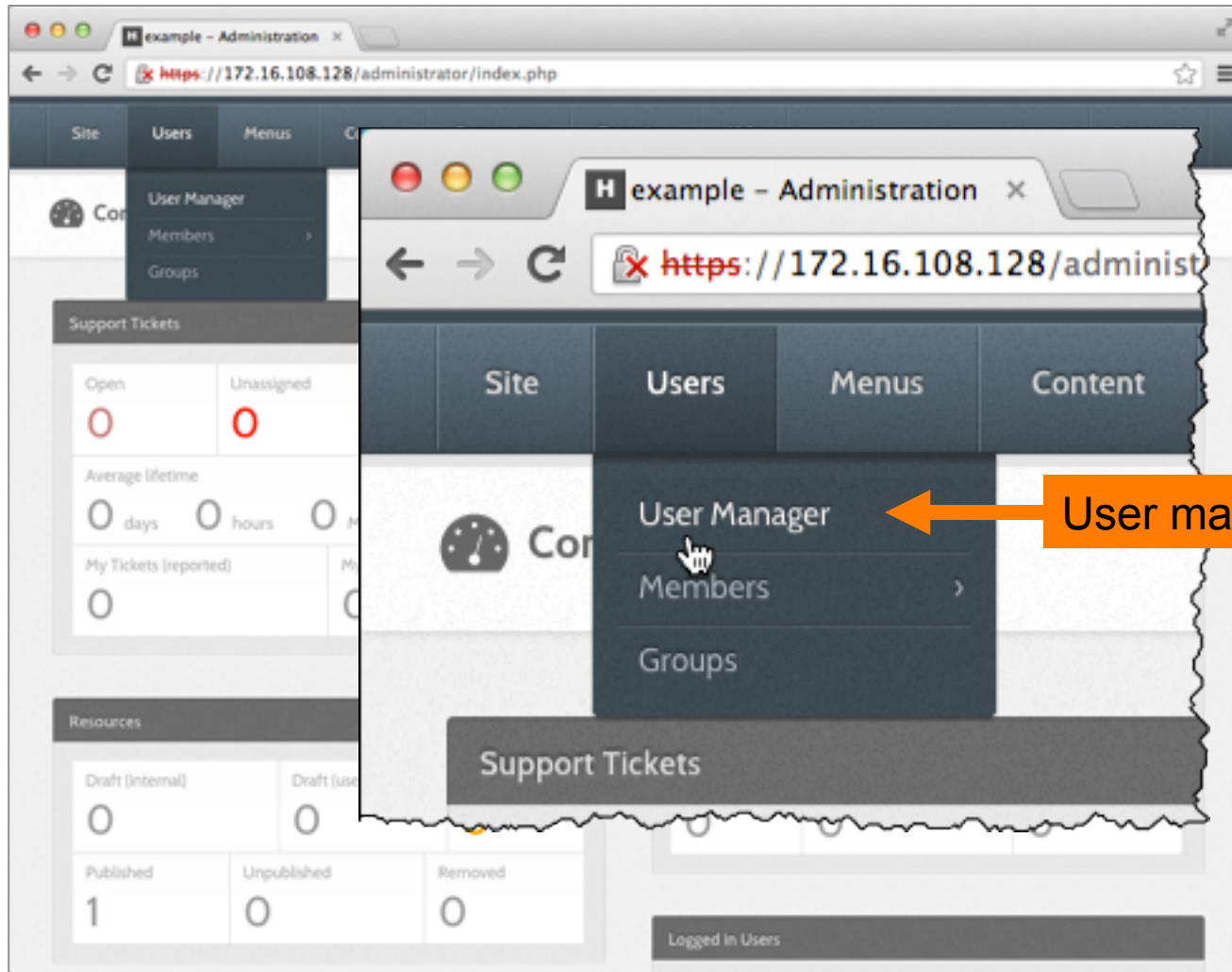


The screenshot shows the HubZero administration interface. On the left, a 'Members' table lists users with columns for ID and Name. The user with ID 1003 and name 'McLennan' is highlighted with a red box. The main area shows the 'Member: [Edit]' form. The 'DETAILS' section includes an 'Email' field with the value 'mmclennan@ieee.org' and a status '(awaiting confirmation)'. Below this, there is a confirmation code '[code: 116985917]' and a 'Confirm' button with a checked checkbox, both highlighted with a red box. At the top right, a control panel with 'Apply', 'Save', and 'Cancel' buttons is shown, with the 'Save' button highlighted by a red box.

Log in as new user



Make yourself an admin



Make yourself an admin



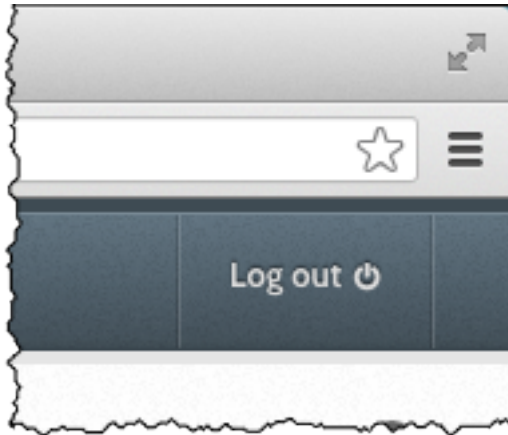
The screenshot shows the HubZero administrator interface. On the left, the 'User Manager' sidebar contains a table of users. The user 'Michael McLennan' is highlighted with a red box. The main content area shows the 'User: [edit]' page for Michael McLennan. A red box highlights the 'Save' button in the top right corner of the main content area. A blue box highlights the 'Group' dropdown menu, which is open to show a list of roles. The roles listed are: Public Front-end, Registered, Author, Editor, Publisher, Public Back-end, Manager, Administrator, and Super Administrator. The 'Super Administrator' role is highlighted with a blue background.

#	Name
1	Applications Manager
2	Michael McLennan
3	Repository Manager
4	Site Administrator

Group

- Public Front-end
 - Registered
 - Author
 - Editor
 - Publisher
 - Public Back-end
 - Manager
 - Administrator
 - Super Administrator

Log in as an administrator



Hub Address
`http://xxx.xxx.xxx.xxx/administrator`

Use your own login from now on

