

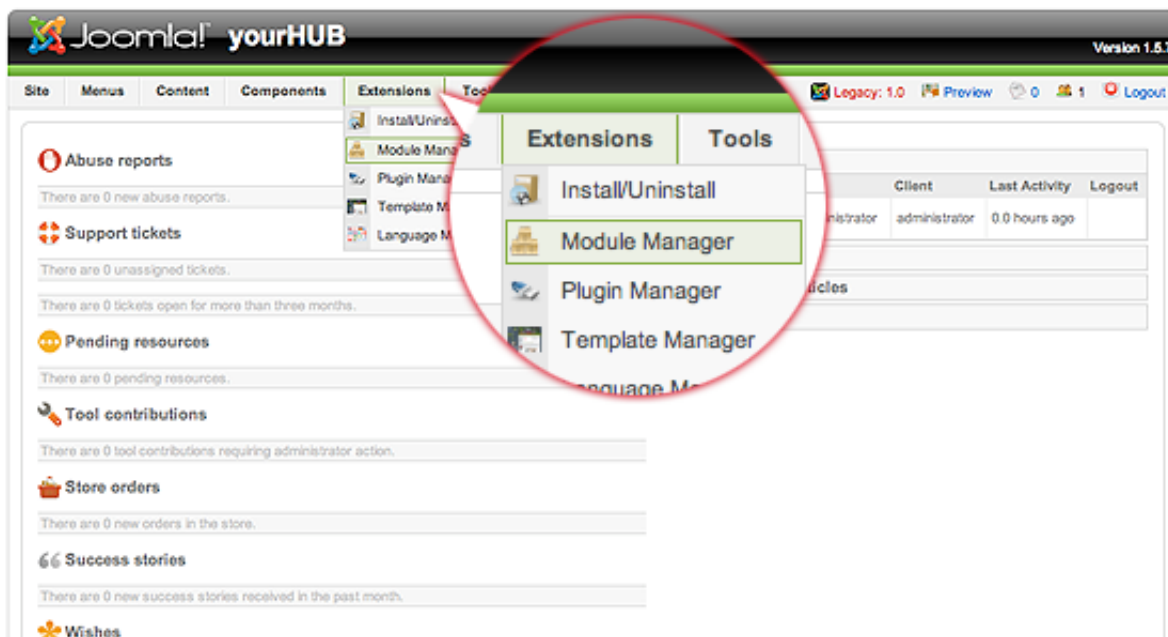
### Hub Admin Welcome

The “welcome” text, typically found to the right of the Flash banner on the home page is a module. To edit this module (or any module):

First login to the administrative back-end.

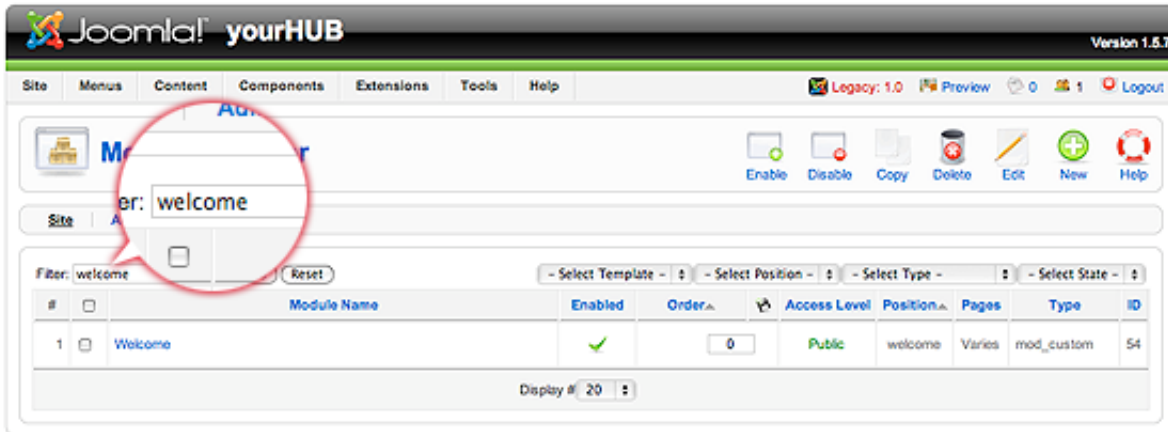
Once logged in, find “Extensions” in the main menu bar located toward the top of the page. You should be presented with a drop-down menu containing items such as “Module Manager”, “Plugin Manager”, etc.

Choose “Module Manager” from the available options.



You should now be presented with a list of all the modules installed on your site. There are a variety of methods to find the specific module you wish to edit: you can filter by selecting position, type, or even state (enabled, disabled). The welcome module would be in position “welcome” and of type “mod\_custom”. You may also search for “welcome” in the filter search box or scroll to the bottom of the page and navigate your way through the entire list. Since modules are alphabetically sorted by their position by default, “welcome” will most likely be on the last page of results. Once found, click the module name to edit it.

## HUB ADMIN WELCOME

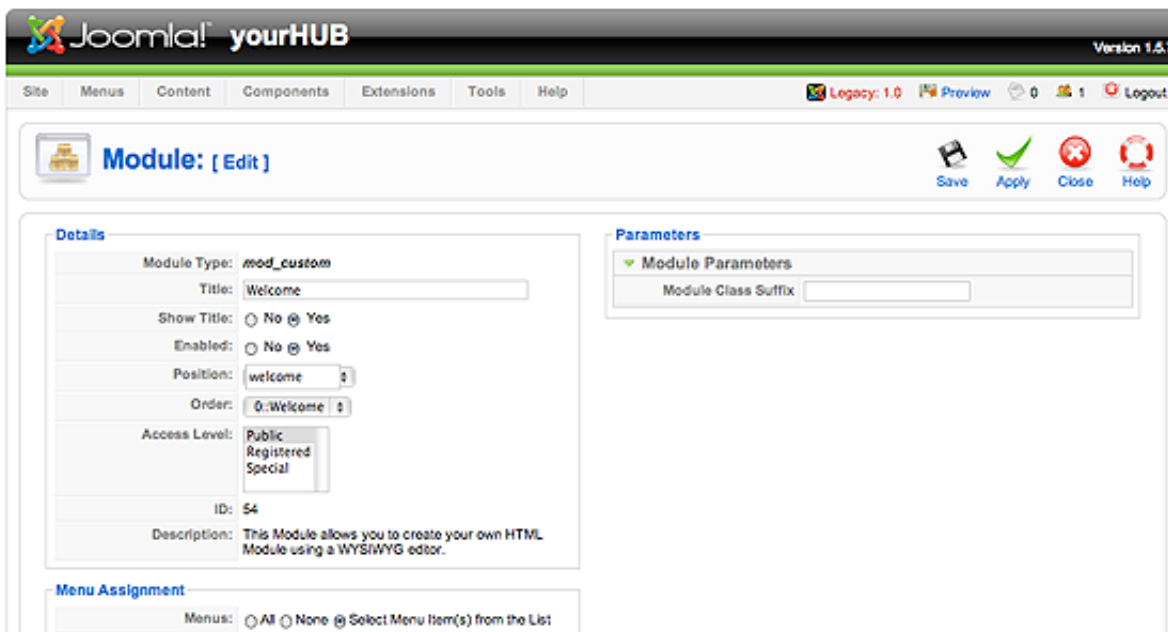


The screenshot shows the Joomla! Admin interface for the 'yourHUB' site, version 1.5.7. The top navigation bar includes 'Site', 'Menus', 'Content', 'Components', 'Extensions', 'Tools', and 'Help'. A search bar at the top right shows 'Legacy: 1.0', 'Preview', and 'Logout'. The main content area displays a list of modules. A red circle highlights the search filter 'welcome' and the 'Welcome' module entry in the table below.

#	<input type="checkbox"/>	Module Name	Enabled	Order	Access Level	Position	Pages	Type	ID
1	<input type="checkbox"/>	Welcome	<input checked="" type="checkbox"/>	0	Public	welcome	Varies	mod_custom	54

Joomla! is Free Software released under the GNU/GPL License.

Once in edit mode you will be presented with some options such as the title, position, etc. To edit the actual content of the module, scroll down until you see a large text area called “Custom Output”.



The screenshot shows the Joomla! Admin interface for the 'yourHUB' site, version 1.5.7, in edit mode for the 'Welcome' module. The top navigation bar and search bar are the same as in the previous screenshot. The main content area displays the 'Module: [ Edit ]' form. The form is divided into two main sections: 'Details' and 'Parameters'.

**Details**

- Module Type: mod\_custom
- Title: Welcome
- Show Title:  No  Yes
- Enabled:  No  Yes
- Position: welcome
- Order: 0: Welcome
- Access Level: Public (Selected), Registered, Special
- ID: 54
- Description: This Module allows you to create your own HTML Module using a WYSIWYG editor.

**Parameters**

- Module Parameters
  - Module Class Suffix: [ ]

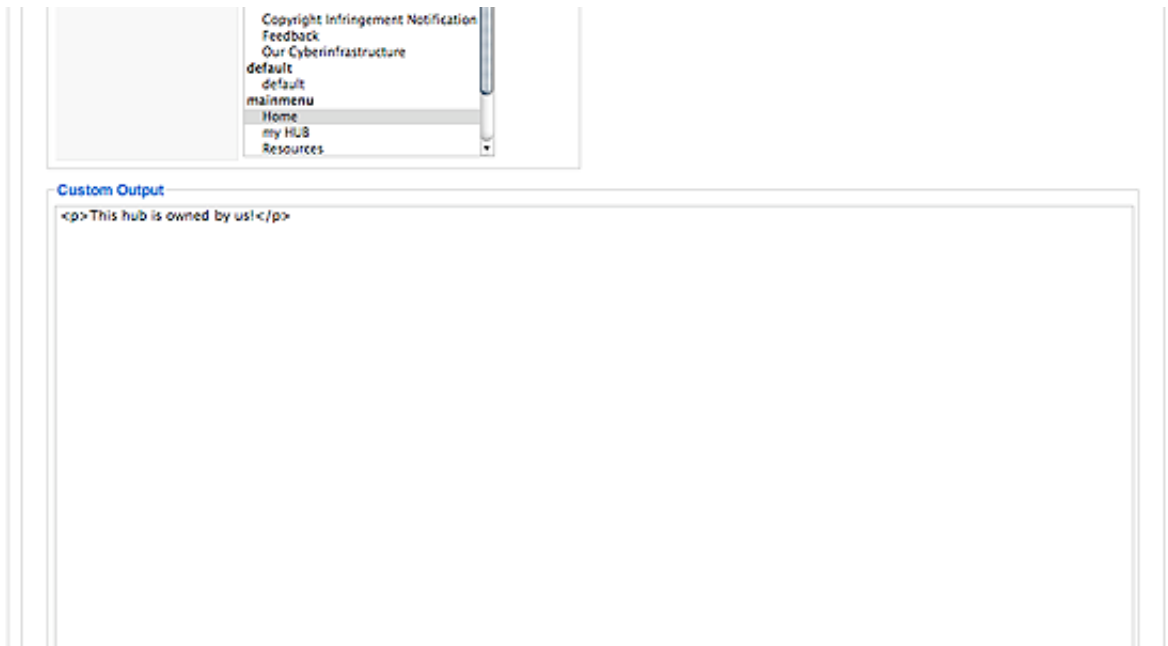
**Menu Assignment**

- Menus:  All  None  Select Menu Item(s) from the List

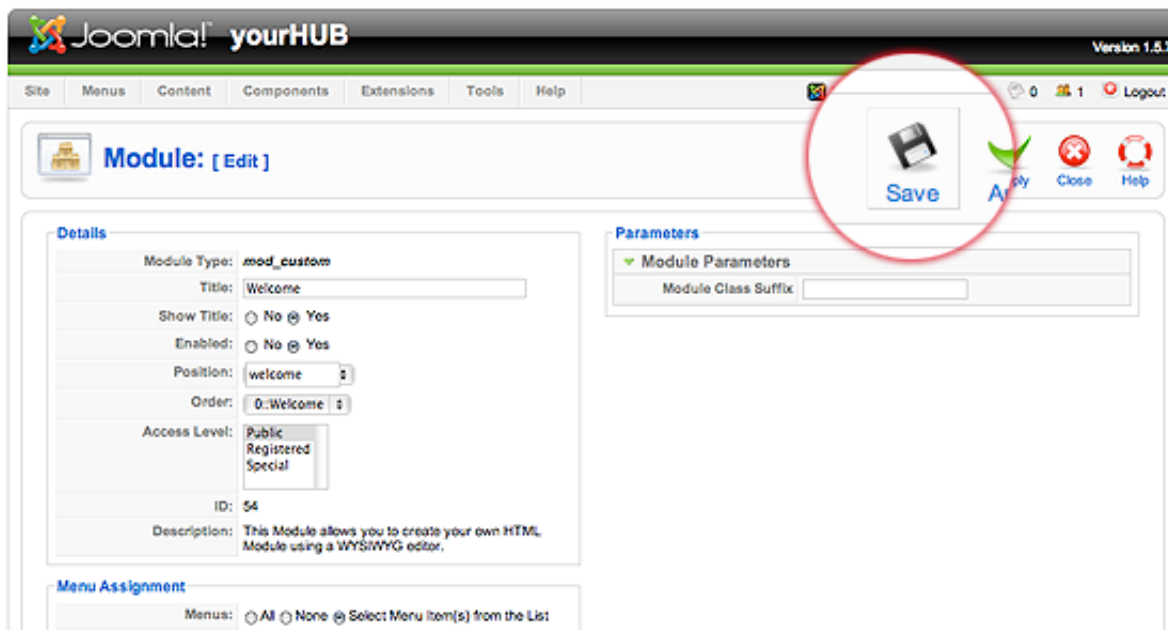
Edit the HTML/text to be outputted.

## HUB ADMIN WELCOME

---



Scroll back to the top of the page and click “Save” (the icon that looks like a floppy disk) in the upper right portion of the page.



Your changes should now be applied and immediately viewable on the front page.

Back to the [Administration Guide](#)