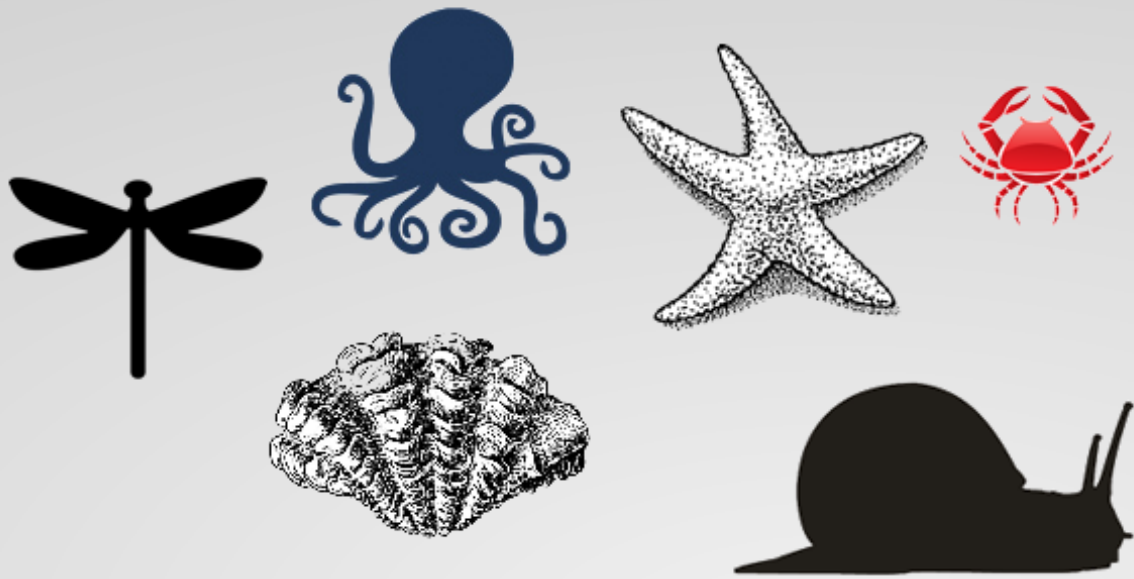




# **InvertNet**

Advancing Digitization of Biological Collections



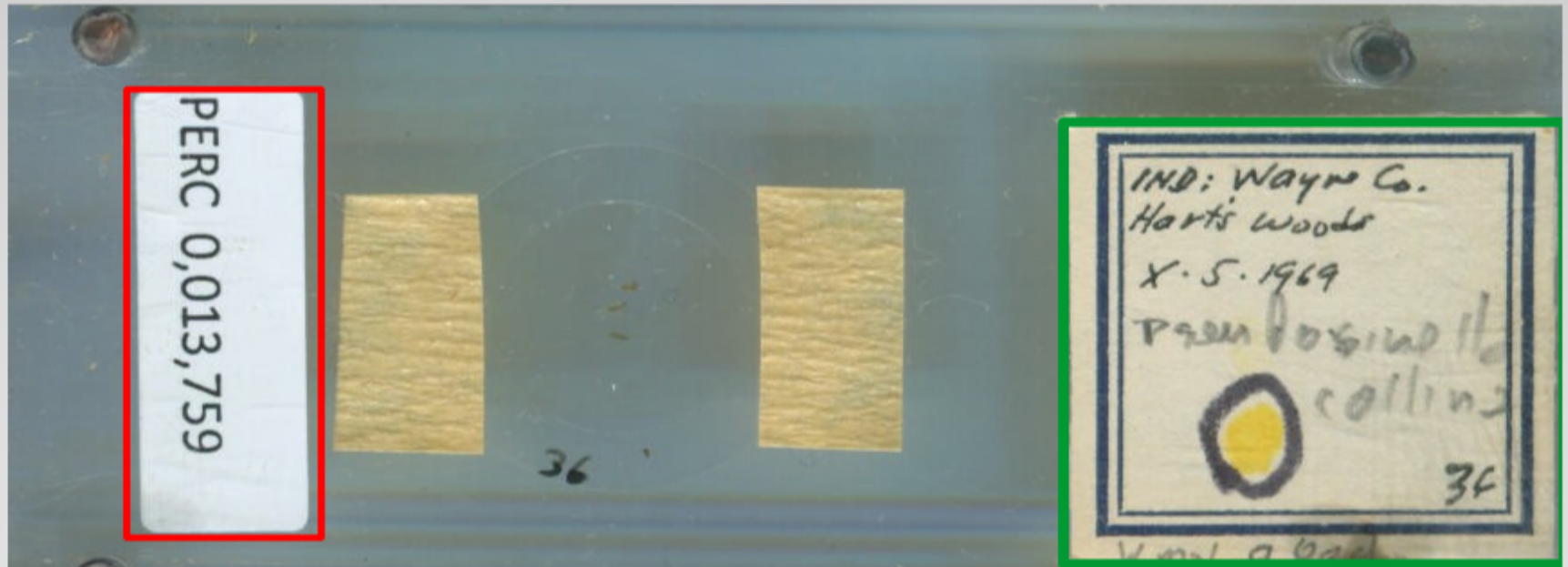
Invertebrates are animal species that do not develop a vertebral column. Familiar examples of invertebrates include insects, worms, clams, crabs, octopus, snails, and starfish



InvertNet is one of three Thematic Collection Networks (TCNs) funded in the first round of the U.S. National Science Foundations Advancing Digitization of Biological Collections (ADBC) program



To provide digital access to ~60 million specimens housed in 22 arthropod collections



The traditional workflow:

- manually keying information from specimen labels into a database
- attaching a unique identifier label to each specimen.





Slide tray images taken on scanner

**KBS COLLECTION**  
**PLECOPTERA**

**P25**

SYSTELLOGNATHA

PERLIDAE

ACRONEURIINAE

Perlesta

placida

[20:KS]

**B**



Vial Tray Setup





Insect Drawer Setup





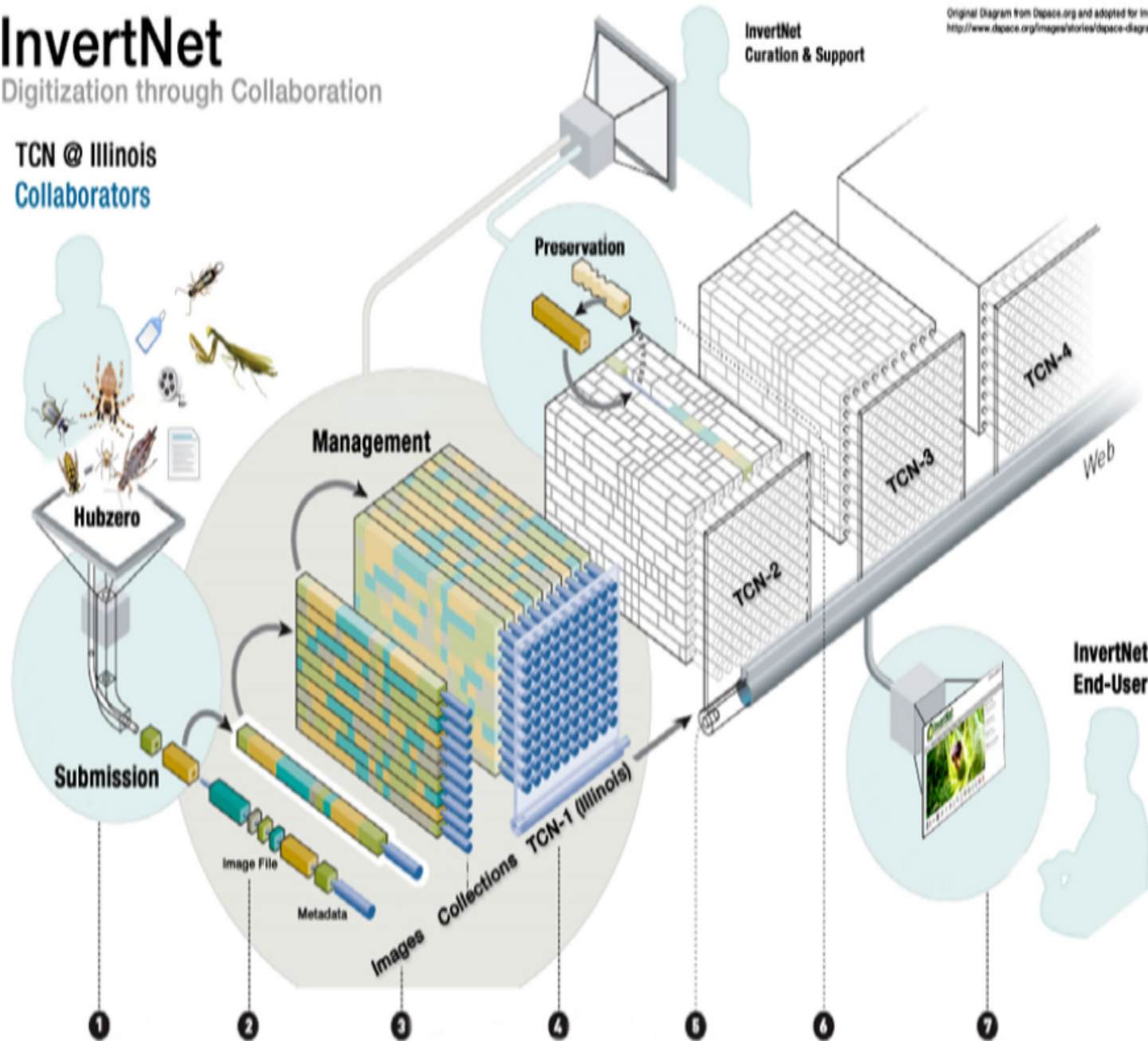
Looking at ~100TB+ of storage

# InvertNet

Digitization through Collaboration

TCN @ Illinois  
Collaborators

Original Diagram from Dspace.org and adopted for InvertNet  
<http://www.dspace.org/images/stories/dspace-diagram.pdf>





**Perdue**



**NCSA**





## Hubzero Features :

- Online Presentations
- Interactive Simulation Tools
- Resource Contribution Workflow
- Tool Development Area
- User Groups
- Usage Metrics

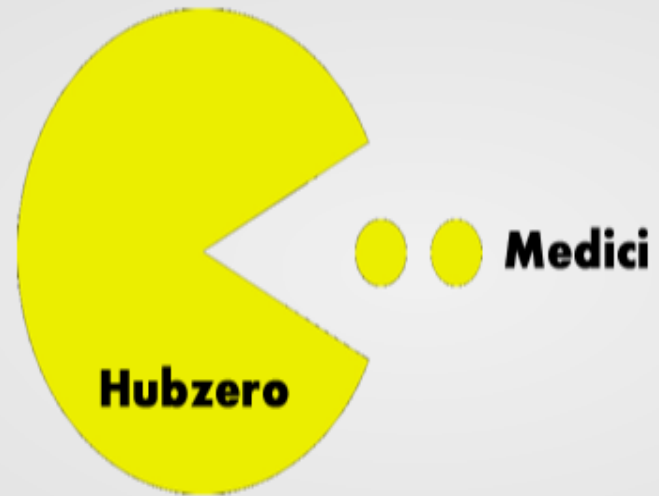
## Medici Features :

- drag-and-drop upload
- extreme zoom capabilities
- automated metadata extraction
- collection creation
- tagging and annotation
- metadata search



**HubDici?**







Lets take a look at some of the  
changes we made to our hubzero  
instance

[START](#)

**Compose**

[Attach](#)

[Authors](#)

[Tags](#)

[Review](#)

[CANCEL](#)

About

Title: **REQUIRED**

Abstract/Description:

The contribution process is intended to be much like composing an e-mail: You'll start with writing the introduction and main content of your contribution and later attach files to it (video, PDFs, etc).

The abstract is typically a one or two paragraph description of your contribution.

# 5 steps to complete a contribution



## Contribute Slide Box

Omar Sobh - University of Illinois at Urbana-Champaign

### Required Information

Unique Box Identifier

Taxonomic Tags

Upload Slide Tray Images

Drag and drop slide tray images here OR [Click here](#) to browse your computer for slide tray images.

Slide Tray 1:

Slide Tray 2:

Slide Tray 3:

Slide Tray 4:

Slide Tray 5:

Arrangement Level

Computerization Level

Condition Of Labels

Conservation Status

Container Condition

Data Quality

Identification Level

Processing State

Remember Profiling Information (Batch Processing)

**Submit and Add Another** OR **Submit and Exit**

Slides

Vials

Drawers



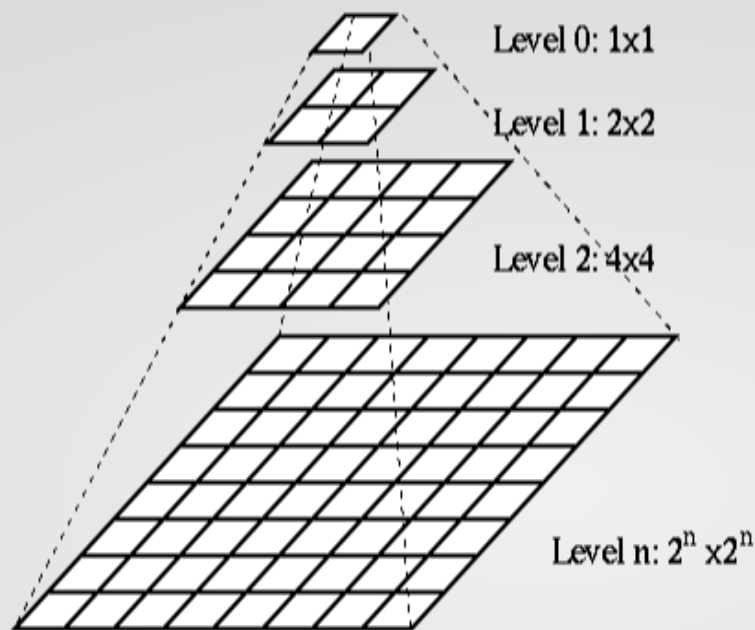
# Contribute Slides

Taxonomic tags

Profiling Metadata

Drag-n-Drop Uploading





Uploaded resources are converted to a tiled pyramidal TIF for deep zooming

