

# Processing Usage Metrics

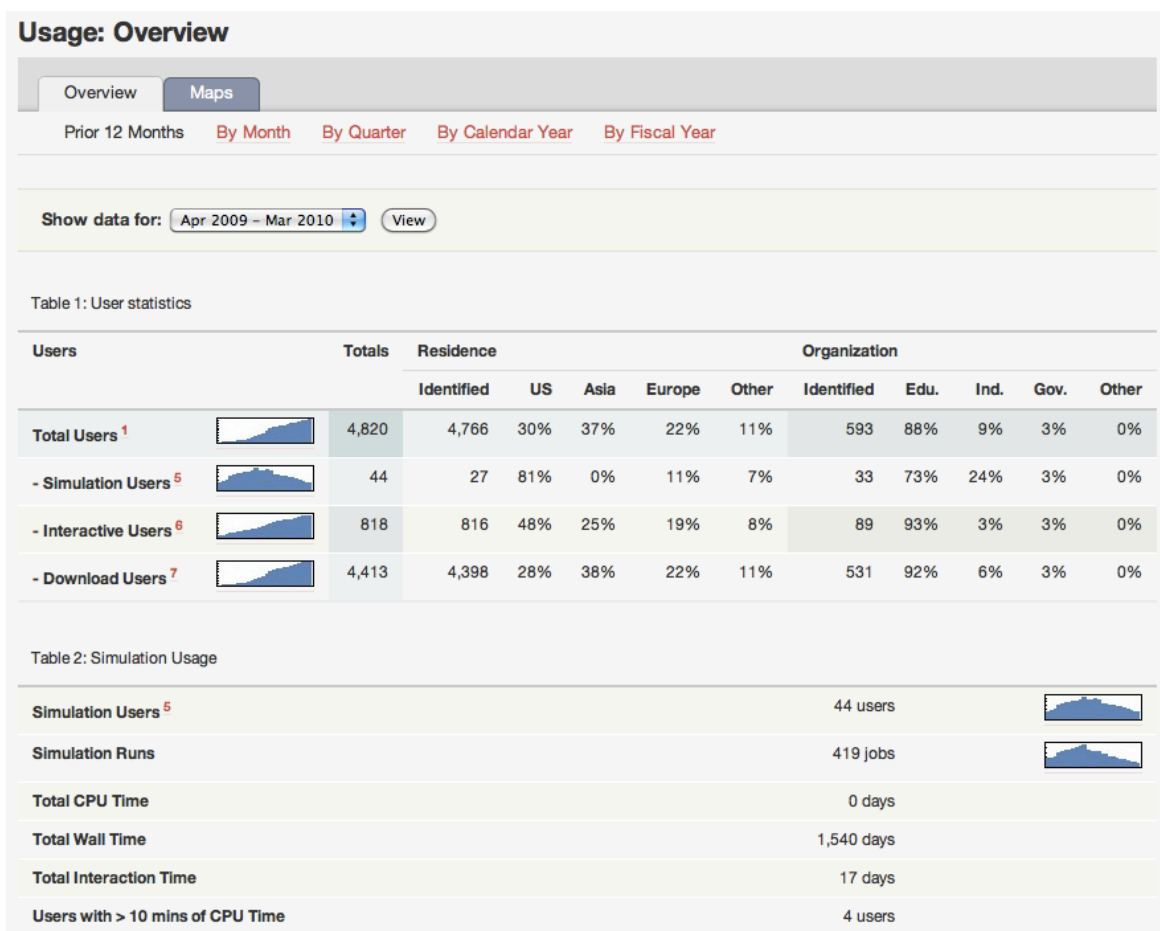
Swaroop Shivarajapura  
HUBbub 2010

At the end of this presentation you will be familiar with ...

- Available Metrics
- Definitions
- Log Files
- Processing Metrics
- Setup, Maintenance and Troubleshooting
  
- Exercise

# Available Metrics

## Summary Usage - <http://myHUB.org/usage>



# Available Metrics

Map of users currently online - <http://myHUB.org/usage/maps>

## Usage: Maps

Overview Maps

### Users Currently Online

Reset map



## Metrics - Definitions

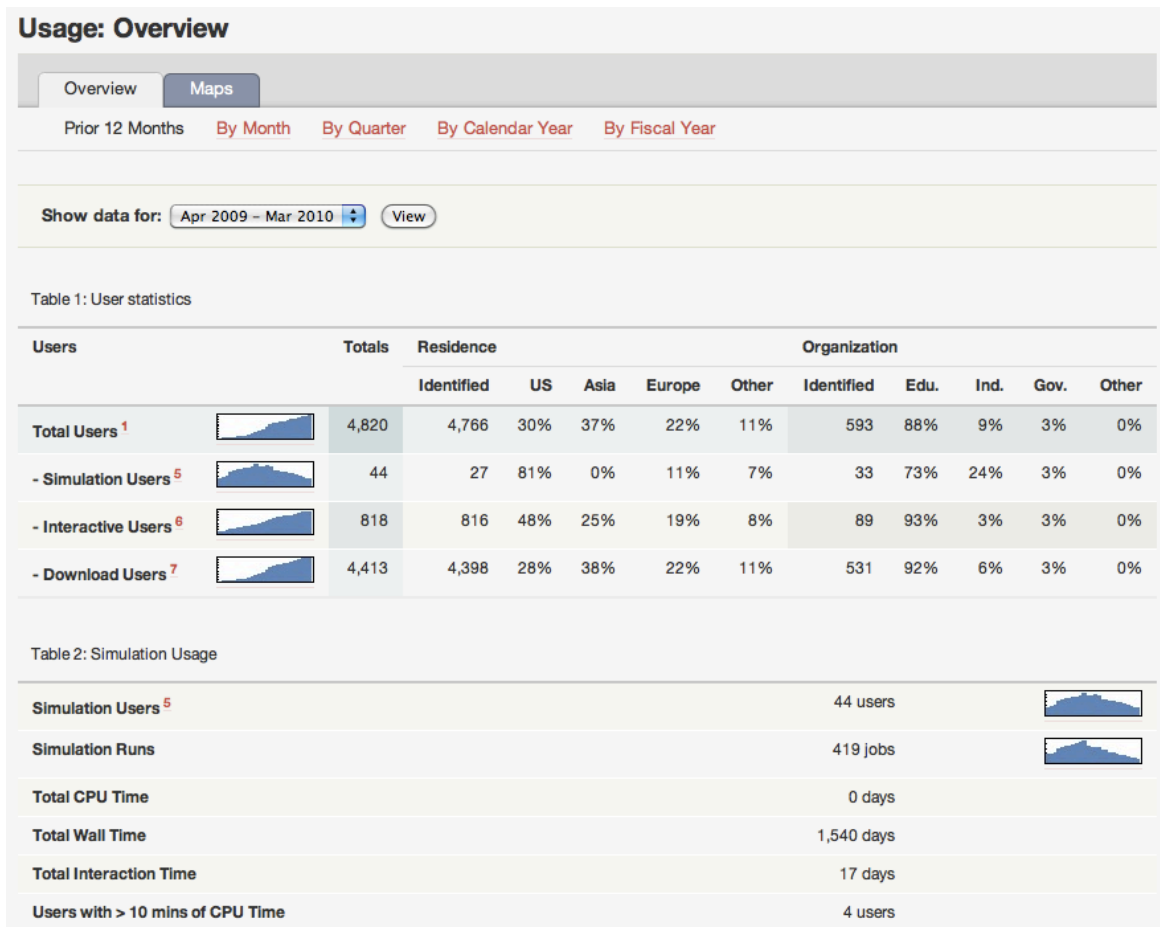
### How we count “Users”

- **Registered Users (1)** - Users that logged in. User registration assigns a unique login to each individual user.
  - » **Simulation Users** - Registered Users that ran one or more simulation runs
- **Unregistered Interactive Users (2)** - Identified by unique hosts/IPs, that had an active session\* without logging in.
- **Unregistered Download Users (3)** - Identified by unique hosts/IPs, that had an active session\* of less than 15 minutes without logging in and downloaded a non-interactive resource such as PDF or podcast.
- **Total Users = (1) + (2) + (3)**

\*Active session = Begins when an IP is active on the site for at least 15 minutes. Ends when inactive for more than 30 minutes, including time spent viewing videos.

# Available Metrics

## Summary Usage - <http://myHUB.org/usage>



# Metrics - Definitions

## Usage – Simulation

Table 2: Simulation Usage

<b>Simulation Users</b> <sup>5</sup>	8,208 users	
<b>Simulation Runs</b>	346,741 jobs	
<b>Total CPU Time</b>	2,300 days	
<b>Total Wall Time</b>	24,148 days	
<b>Total Interaction Time</b>	7,749 days	
<b>Users with &gt; 10 mins of CPU Time</b>	2,036 users	
<b>Avg. Number of Simulation Runs/User</b>	42 jobs	
<b>Avg. Time between First and last Simulation</b>	187 days	
<b>Repeat Users with &gt; 10 Simulation Jobs</b>	4,338 users	
<b>Repeat Users with &gt; 3 Months</b> <sup>9</sup>	2,446 users	

# Metrics - Definitions

## Usage – Miscellaneous

Table 3: Miscellaneous Statistics

<b>Domains Served</b>	13,660
<b>Cummulative Interactive User Sessions <sup>10</sup></b>	193,655
<b>Cummulative Session Time</b>	8,082 days
<b>Visitors <sup>11</sup></b>	279,647
<b>Visits <sup>12</sup></b>	909,026
<b>New Accounts</b>	8,131
<b>Max User Logins</b>	465 users on 2010-02-09
<b>Web Server Hits</b>	59,525,241



## Metrics - Available Log Files

- User Registration Information (jos\_xprofiles)
  - » Name, Email, Organization, Org. Type, Country Residence etc
- Apache log

```
2010-04-12 21:08:22 EDT - "GET /resources/169/download/2.2_Rappture_Advanced.pdf
HTTP/1.1" 200 289555 128.46.18.28 "http://hubzero.org/resources/168" "Mozilla/
5.0 (Macintosh; U; Intel Mac OS X 10_6_3; en-US) AppleWebKit/533.2 (KHTML, like
Gecko) Chrome/5.0.342.9 safari/533.2" - 0 150812 -
210e36d84277c2f19aad082dc031adb=0667a4181a3e56b00a45b8b8481ed878
```

- Joomla's auth log

```
2010-04-06 15:45:11 swoop 128.46.16.26 detect
2010-04-08 14:45:06 2143 [swoop] 128.46.16.26 login
2010-04-08 14:55:10 swoop 128.46.16.26 logout
2010-04-09 04:03:19 swoop 128.46.16.26 invalid
```

## Metrics - Available Log Files

- Middleware logs

**Sessionlog:**

Session# - Username - IP - ExecHost - Start - Appname - [wall](#) - [CPU](#) - [View](#) - Status

**Joblog:**

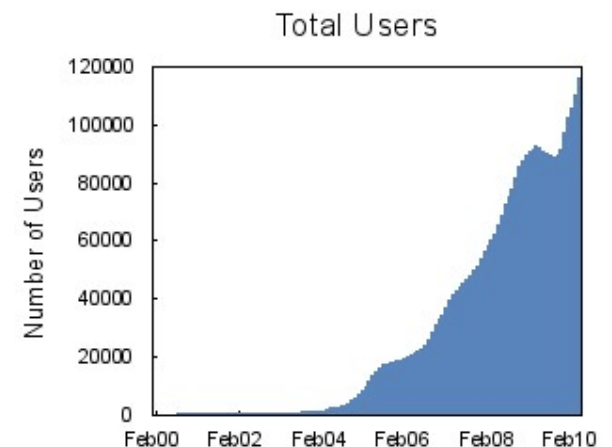
Session# - Job# - Superjob# - Event - Start - [wall](#) - [CPU](#) - Ncpus - Status - Venue

**Viewlog:**

Session# - Username - IP - Host - [Time](#) - Duration

## Metrics Processing Steps

- Import Apache and Joomla's auth logs
- Import Middleware Logs
- Resolve hostnames and extract domain information
- Stitch Sessions
- Remove identified bots
- Look up user information for simulation logs
- Country Location lookup for IPs
- Generate Summary and Plots



## Metrics - Setup and Maintenance

### Setup and Maintenance and Troubleshooting

- Check apache, Joomla and middleware logs
- Configure Cron for rotation and import of logs
- E.g. Cron setting for whoisonline module  
/etc/cron.d/crontab\_hub

```
*/5 * * * * www-data /opt/hubzero/bin/xlogfix_whoisonline
```

- Monitor disk space
- Backup log files and database tables



Demo:

- Signing up for Google Analytics

Exercise

- Setting up a Google maps API Key