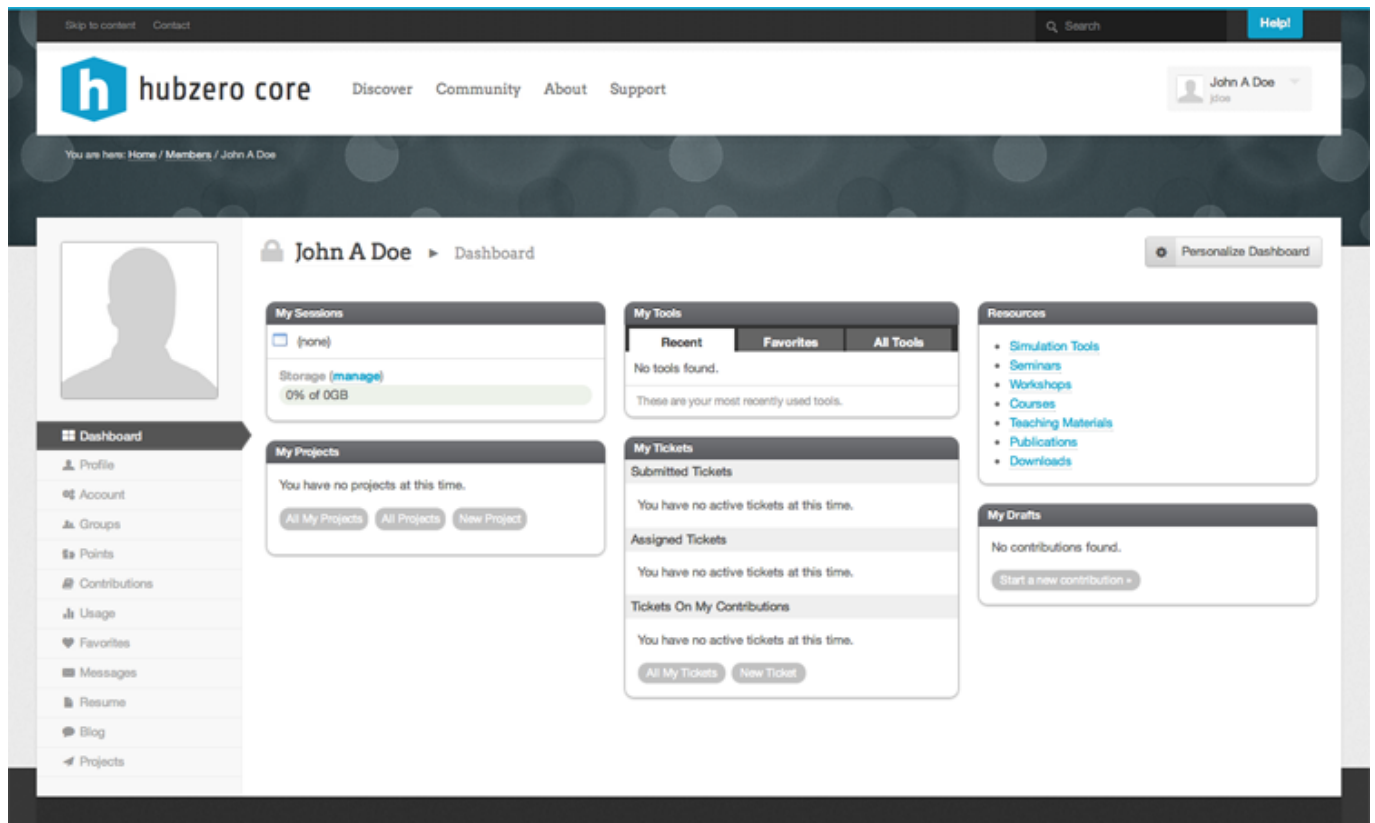


Dashboard

Member Dashboard

The Member Dashboard section is the user's landing page after logging in successfully. It has a number of widgets that contain items for easy access, for example the "My Sessions" widget which lists any of your current tool sessions and also shows your storage space usage.

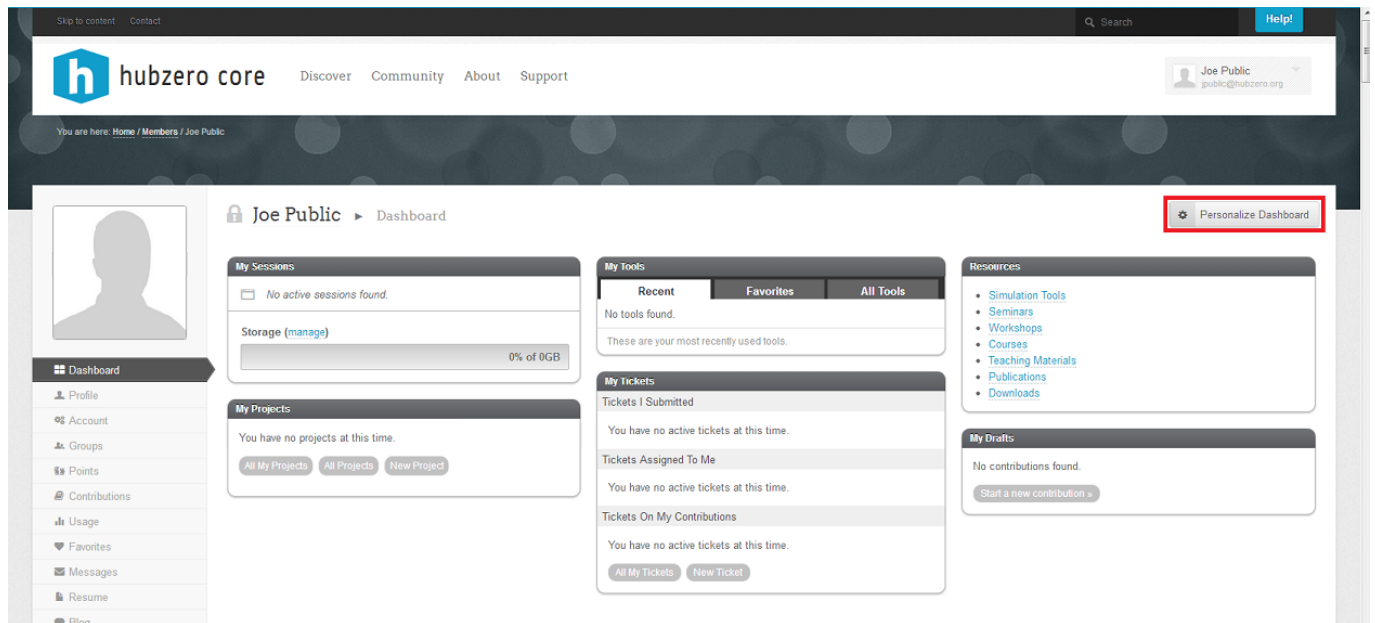


Personalizing Your Dashboard

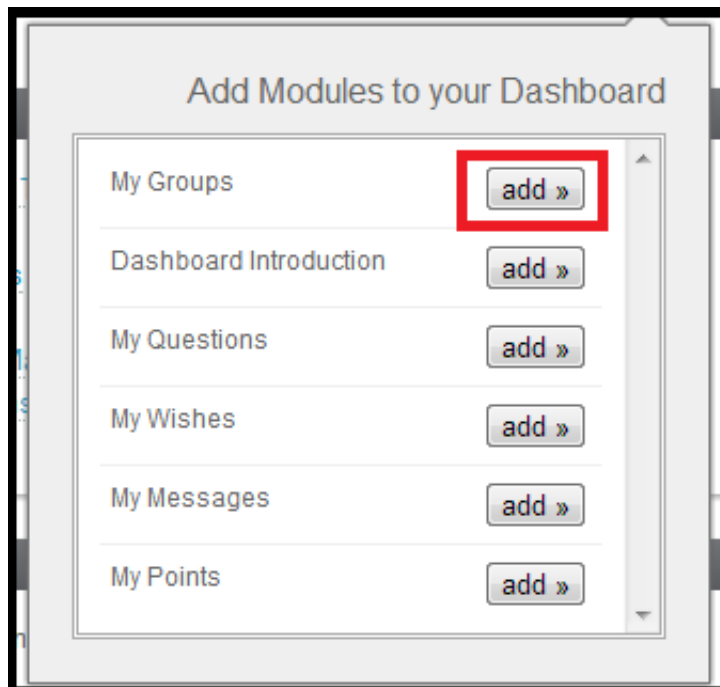
You have the option to personalize your Dashboard by adding, removing, or rearranging modules. This customization feature allows you to fit the Dashboard to your personal needs. Once it has been personalized, it will appear how you arranged it at each login.

To add a module to your Dashboard:

DASHBOARD



1. Place your mouse pointer on the Personalize Dashboard button in the upper right hand corner of the screen. This button allows you to add a module.
2. A box will appear with a list of modules available. Click the "add" button next to the module you would like added to your Dashboard.



After clicking "add", the new module will appear on your dashboard.

DASHBOARD

h hubzero core Discover Community About Support

Joe Public public@hubzero.org

You are here: Home / Members / Joe Public

Joe Public Dashboard Personalize Dashboard

My Sessions
No active sessions found.
Storage (manage) 0% of OGB

My Tools
Recent Favorites All Tools
No tools found.
These are your most recently used tools.

My Projects
You have no projects at this time.
All My Projects All Projects New Project

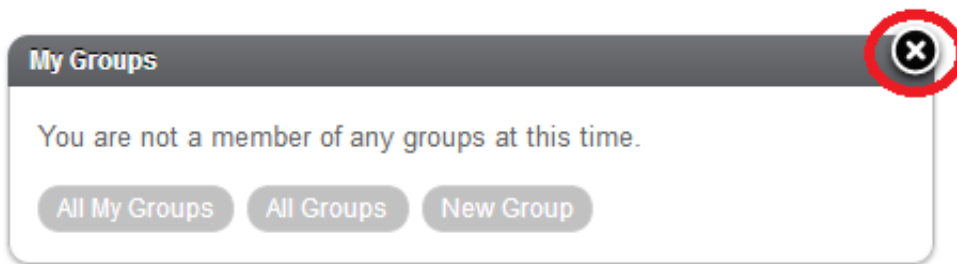
My Groups
You are not a member of any groups at this time.
All My Groups All Groups New Group

My Tickets
Tickets I Submitted
You have no active tickets at this time.
Tickets Assigned To Me
You have no active tickets at this time.
Tickets On My Contributions
You have no active tickets at this time.
All My Tickets New Ticket

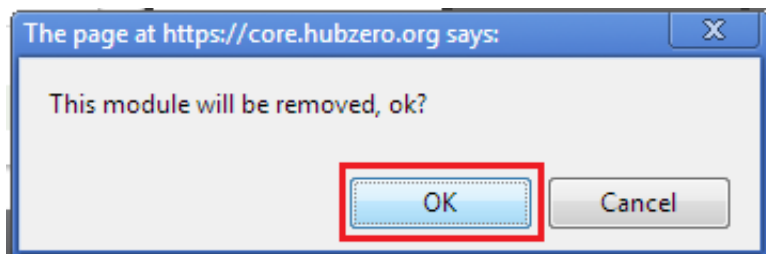
Resources
• Simulation Tools
• Seminars
• Workshops
• Courses
• Teaching Materials
• Publications
• Downloads

My Drafts
No contributions found.
Start a new contribution >

To remove a module to your Dashboard:

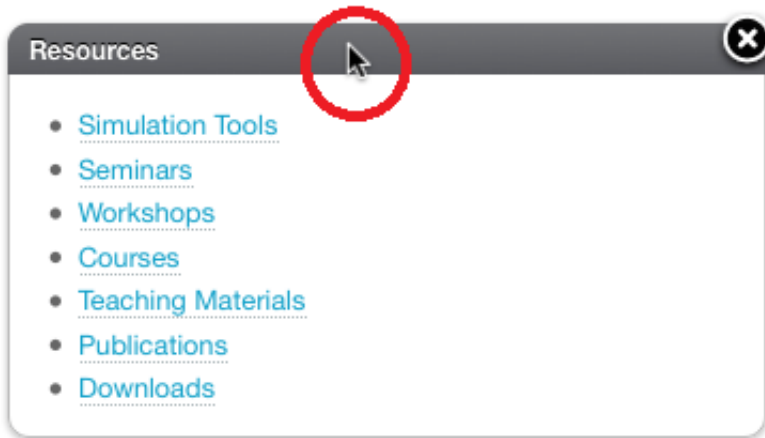


1. Place your mouse pointer over the upper right hand corner of the box, and click the X that appears.
2. A message will appear asking you to confirm the removal. Click OK to confirm.



To rearrange your modules:

DASHBOARD



1. Place your mouse on the top of the module you wish to move until a cursor appears.
2. Press and hold down the button on the mouse or other pointing device to grab the module.
3. Drag the module to the desired location, and drop it by releasing the button.

